

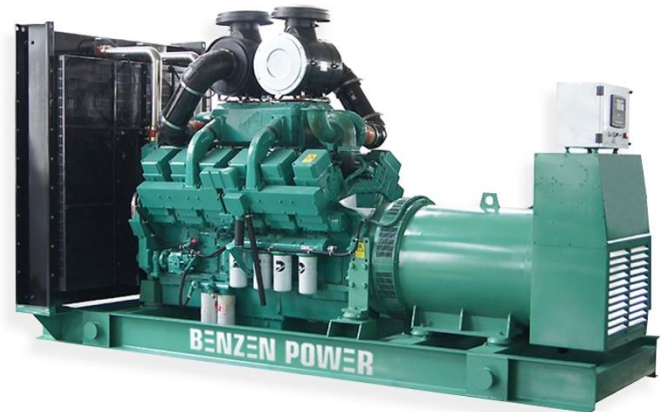
DIESEL GENERATOR SET

Model: CD-1375KT

Rate Power: 1250kVA/ 50Hz/ 3 phases

Applications:

Home, Buildings, Hospitals, Train station, Bank, Telecom, Mining, Military, Outdoor projects, etc.



Color choices:



Features and Benefits

- Tightly structure, excellent design and craft
- Excellent cooling system, reliable performance under the harshest conditions (ambient temperature up to 40°C and altitudes up to 1000m)
- Self-diagnostic capability simplifies troubleshooting
- LCD display shows system status setup information
- Automatic voltage regulator protects your sensitive electronics from harmonic distortion and unstable power quality
- Open type: Very quite running: 90±3dB(A) at 23ft(7m) at normal load.
- Enclosed muffler for added quietness
- Service and; maintenance accessible through easy-latch side service door

Generator Data

| | |
|--------------------------------------|----------------|
| Prime Power (kVA) | 1250 |
| Standby Power (kVA) | 1375 |
| Rated Frequency (Hz) | 50 |
| Running Noise db(A)/7m (Silent type) | 90±3 |
| Vltage (V) | 230/380 |
| Curent (A) | 1917 |
| No.Phase | 3 |
| Open Type-Dimension (LxWxH) (mm) | 4450*1750*2430 |
| Open Type-Weight (kg) | 7790 |
| Fuel Tank Capacity (L) | Option |
| Fuel | Diesel |

Engine Specifications

Main features:

Brand: Cummins

- 12-cylinder, water-cooled, 60 Degree Vee, diesel engine.
- Efficient fuel system for max power output and durability.
- Large-capacity air cleaner.
- Cost effective, fuel efficient and reliable performance.
- Functional engine with compact structure.
- Excellent after-sales service and sufficient spare parts supplying.
- Easy installation and ready access for routine maintenance

| | |
|------------------------|---------------------------|
| Model | QSK38-G5 |
| Output Power (kw) | 1224 |
| Cylinder No. & Config. | V12, 60 degree Vee |
| Type | 4 cycle, Diesel |
| Displacement (liters) | 37.7L |
| Governor | Electrical type |
| Engine System (r/min) | 1500 |
| Air intake system | Turbocharged, Aftercooled |
| Fuel Consumption (L/h) | 206 |
| Oil Capacity (L) | 170.3 |
| Bore x Stroke (mm) | 159x159 |

Alternator specifications

Main Features:

- Advanced automatic voltage regulator (AVR) control for trouble-free operation under the most demanding conditions.
 - 2/3 pitch winding as standard, to avoid excessive neutral current.
 - Single or two bearing construction with dynamically balanced rotor and sealed-for-life bearings.
 - Easy access for installation and maintenance.
 - IP23 as standard.
 - Self-excited control system.
- Resist of corruption of oil and acid.

| | |
|-----------------------|---------------------------------------|
| Brand options: | Mecc-Atle/ Leroy Somer/ Benzen |
| Model | / |
| Rated Power (kVA) | 1250 |
| Excitation System | Brushless, self-exciting |
| Connection Type | 3 phases, 4 wires |
| Pole No | 4 |
| Regulator type | AVR |
| Protection class | IP23 |
| Insulation class | H |



Control Panel System

Options:



DEEP SEA



DATAKOM



COMAP

Main Features:

- Using microprocessor as a core, graphics LCD with big screen and backlight, key touch for operation
- All parameters use digital modulation, with higher reliability and stability
- Built-in speed/frequency detecting units can accurately judge the states such as crank success and over speed
- Security password-protected programming levels
- Power supply range is wide, accommodating to different starting battery voltage environment
- Built-in watch dog can never be dead halt, ensuring smooth program execution
- Modular configuration design, inserted type connection terminals, flush type installation, compact structure, easy installation

Precision measure and display of:

- ✓ Generator voltage
- ✓ Generator current
- ✓ Generator frequency
- ✓ Generator active power (kW)
- ✓ Generator inactive power (kW)
- ✓ Generator apparent power (kVA)
- ✓ Generator power factor
- ✓ Generator starts count
- ✓ Generator hour count
- ✓ Cumulate electric energy (kWh)
- ✓ Generator temperature
- ✓ Generator pressure
- ✓ Start battery voltage

Protection:

- ✓ Emergency stop
- ✓ High water temperature
- ✓ Low oil pressure
- ✓ Over speed
- ✓ Under speed
- ✓ Loss of speed signal
- ✓ Generator over frequency
- ✓ Generator under frequency
- ✓ Generator over voltage
- ✓ Generator under voltage
- ✓ Generator over current
- ✓ Fail to start
- ✓ Auxiliary inputs

* Reserves the right to change the specifications and designs without notice.