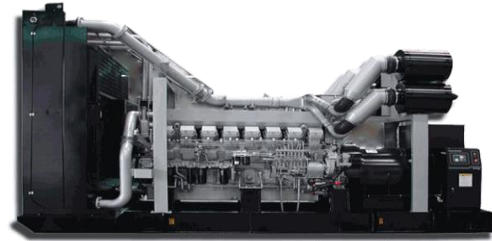


DIESEL GENERATOR SET

Model: MDS-1825T

Rate Power: 1650kVA/ 50Hz/ 3 phases



Applications:

Home, Buildings, Hospitals, Train station, Bank, Telecom, Mining, Military, Outdoor projects, etc.

Color choices:



Features and Benefits

- Tightly structure, excellent design and craft
- Excellent cooling system, reliable performance under the harshest conditions (ambient temperature up to 40°C and altitudes up to 1000m)
- Self-diagnostic capability simplifies troubleshooting
- LCD display shows system status setup information
- Automatic voltage regulator protects your sensitive electronics from harmonic distortion and unstable power quality
- Soundproof type: Very quite running: 75±3
- Enclosed muffler for added quietness
- Service and; maintenance accessible through easy-latch side service door

Generator Data

Prime Power (kVA)	1650
Standby Power (kVA)	1825
Rated Frequency (Hz)	50
Running Noise db(A)/7m (Silent type)	75±3
Voltage (V)	230/380
Curent (A)	2500
No.Phase	3
Silent Type-Dimension (LxWxH) (mm)	
Silent Type-Weight (kg)	
Fuel Tank Capacity (L)	
Power factor	0.8

Engine Specifications

Main features:

Brand: Mitsubishi Shanghai - China

- 16-cylinder, water-cooled, V-Type diesel engine
- Efficient fuel system for max power output and durability.
- Large-capacity air cleaner.
- Cost effective, fuel efficient and reliable performance.
- Functional engine with compact structure.
- Excellent after-sales service and sufficient spare parts supplying.
- Easy installation and ready access for routine maintenance

Model	S16R-PTA
Output Power (kw)	1450
Cylinder No. & Config.	16, V-Type
Type	4 cycle , Diesel
Displacement (liters)	65.37 L
Governor	Electric type
Engine System (r/min)	1500
Air intake system	Turbo, Inter-cooled
Fuel Consumption (L/h)	350
Oil Capacity (L)	230
Compression ratio	14.0:1

Alternator specifications

Main Features:

- Advanced automatic voltage regulator (AVR) control for trouble-free operation under the most demanding conditions.
- 2/3 pitch winding as standard, to avoid excessive neutral current.
- Single or two bearing construction with dynamically balanced rotor and sealed-for-life bearings.
- Easy access for installation and maintenance.
- IP23 as standard.
- Self-excited control system.
Resist of corruption of oil and acid.

Brand options:	Stamford/ Mecc Alte/ Benzen
Model	
Rated Power (kVA)	1650
Excitation System	Brushless, self-exciting
Connection Type	3 phases, 4 wires
Pole No	4
Regulator type	AVR
Protection class	IP23
Insulation class	H

Control Panel System

Options:



DEEP SEA



DATAKOM



COMAP

Main Features:

- Using microprocessor as a core, graphics LCD with big screen and backlight, key touch for operation
- All parameters use digital modulation, with higher reliability and stability
- Built-in speed/frequency detecting units can accurately judge the states such as crank success and over speed
- Security password-protected programming levels
- Power supply range is wide, accommodating to different starting battery voltage environment
- Built-in watch dog can never be dead halt, ensuring smooth program execution
- Modular configuration design, inserted type connection terminals, flush type installation, compact structure, easy installation

Precision measure and display of:

- ✓ Generator voltage
- ✓ Generator current
- ✓ Generator frequency
- ✓ Generator active power (kW)
- ✓ Generator inactive power (kW)
- ✓ Generator apparent power (kVA)
- ✓ Generator power factor
- ✓ Generator starts count
- ✓ Generator hour count
- ✓ Cumulate electric energy (kWh)
- ✓ Generator temperature
- ✓ Generator pressure
- ✓ Start battery voltage

Protection:

- ✓ Emergency stop
- ✓ High water temperature
- ✓ Low oil pressure
- ✓ Over speed
- ✓ Under speed
- ✓ Loss of speed signal
- ✓ Generator over frequency
- ✓ Generator under frequency
- ✓ Generator over voltage
- ✓ Generator under voltage
- ✓ Generator over current
- ✓ Fail to start
- ✓ Auxiliary inputs

* Reserves the right to change the specifications and designs without notice.